

# Lesbian, Gay, Bisexual and Trans History Month

Your guide to the events in Islington in February 2009



# Contents

- 3 Foreword
- 4 The National Theme of 'Youth and Education'
- 5 Walking Proud in Islington
- 6 Programme of Events
- 10 Anniversaries in 2009
- 11 Launch Event and Closing Gala
- 12 A Day in Our Life and London Metropolitan University
- 13 London Friend and Pace
- 14 Central Station
- 15 Art Exhibitions and theatre voucher

We would like to thank the following organisations for their involvement and support in this important and exciting month of events:



# Foreword



**Islington is a diverse and exciting borough that people love to live in, work in and visit.**

Surveys show that Islington has one of the highest populations of lesbian, gay, bisexual and trans (LGBT) people in the country. The borough has always been at the heart of London's LGBT history – from the first gay rights demonstration, to ground-breaking community organisations.

But this is not all history. Islington continues to lead the way in 2009 with the publication of our Sexual Orientation Equality Scheme. We are one of the first councils to adopt such a scheme. It builds on the human rights approach we have taken, challenging the council to be an example of respect and fairness to the whole Islington community. But we know there is more to do.

At Islington Council, we are proud of this rich heritage and current work, and so for the fourth year running, we will be enjoying a range of events to celebrate the achievements of the LGBT community, as part of LGBT History Month.

This year, a partnership of local community organisations and venues working with the support of the council, brings you a range of events to celebrate the national theme – Youth and Education.

Take a look through this booklet to find out more about the activities planned, including a Walking Proud in Islington exhibition, art and photographic shows, pub quizzes, book and poetry events, and much more.

With such a variety of events, there's something for everyone, regardless of sexual orientation.

I look forward to seeing you there!

**Councillor Ruth Polling**  
Executive Member for  
Leisure and Equalities

# The National Theme of 'Youth and Education'



**LGBT History Month 2009 is a national festival that gives everyone the opportunity to experience and participate in a wide range of related events that contribute to a safer, more tolerant society.**

## The role of education and schools

Education has always been vital to being accepted in society and that's why we're supporting this theme so strongly in 2009. To mark LGBT History Month in Islington, schools will be offered a variety of activities and resources, including:

- briefings on equality from their link school police officer
- staff training on tackling homophobic language and bullying



**It is important to celebrate LGBT History Month in schools to promote equality and raise awareness. Our schools embody this and it is paramount that every child and young person feels not only included, but represented and reflected in all activities within their school. This could be reading LGBT fiction in their school library or learning about early Pride marches in a history lesson.**

**Cllr Paula Belford, Executive Member for Children and Young People**

- free posters advertising help lines for young people
- resource packs on how to cover the month in a variety of curriculum subjects
- book lists from the Education Library Service.

## Homophobic bullying in Islington

Pupils responding to the Islington & You Survey 2002 reported that homophobic bullying is common, often open and rarely commented on by teachers or staff. To combat this, the anti-bullying coordinator will be working with schools to celebrate LGBT History Month. They will focus on the contribution of LGBT people throughout history and today, as well as covering equality issues and how to prevent homophobic bullying.

# Walking Proud in Islington

**Islington can justifiably claim to be the queerest borough in Britain! From the gay liberation front and campaign for homosexual equality to the first gay rights demonstration and pride march; from the first out mayor and MP to long-serving organisations like London Lesbian & Gay Switchboard and London Friend; from innovative, independent venues to the iconic London Lesbian and Gay Centre and Sisterwrite bookshop.**

Then there's the site of Kenneth Williams' birth or Joe Orton's death, or Derek Jarman's canonisation by the Sisters of Perpetual Indulgence or the founding place of the UK's first gay rugby club (Kings Cross Steelers) and the first gay cricket team (Graces).

For the first time, backed by Islington Council and the Met Police, the LGBT museum Proud Heritage has been working to collect and display this history. Visit the exhibition at the Local Heritage Centre (Finsbury Library), or join us on a walk.



If you have material or memories to contribute – or would like to volunteer – please contact Jack Gilbert on **07719 378143** or [jack.gilbert@prouderitage.org](mailto:jack.gilbert@prouderitage.org).

**Above:** Plaque in Highbury Fields, N5

**Below:** 25th anniversary re-enactment (images courtesy Proud Heritage and MPG archives)



# Programme of Events

EVENT	DETAILS
<b>Launch Event – Youth and Education</b>	We celebrate the start of the month with the opening of an exhibition of LGBT art and artists, followed by a short concert of music and entertainment. Please see page 11 for more details or for a free ticket, email <a href="mailto:andrew.younger@islington.gov.uk">andrew.younger@islington.gov.uk</a> .
<b>LGBT Art Exhibition</b>	This art exhibition is by young people and artists, and it celebrates LGBT life both past and present. It will be previewed at the Launch Event (above). See page 15 for more details.
<b>Walking Proud in Islington</b>	Ground-breaking exhibition revealing the queerest borough in Britain. From politics to parties, from community service to the arts, this borough has touched the lives of hundreds of thousands of LGBT people. See page 5 for more details.
<b>A Day in Our Life</b>	Grab a unique opportunity to record what being LGBT means to you during LGBT History Month 2009. We'd like you to photograph and record the places and people in Islington that mean something to you. See page 12 for more details.
<b>Traces – Circus as you've never seen it before!</b>	A runaway hit at the Edinburgh Festival last year, Traces offers a whole new, gravity-defying brand of circus. Packed with infectious energy and a vibrant urban flavour, this unique theatre experience looks set to be a hot ticket in 2009.
<b>Famous Cruising Grounds Past and Present</b>	From a time when homosexuality was illegal, local painter Warwick Stanley has created this collection of watercolour drawings inspired by famous cruising grounds in Islington and Camden.
<b>Walk Proud – a radical heritage trail</b>	This walk rediscovers the first gay rights demo in Britain. You'll also learn more about the first march, key sites of lesbian/feminist history, historic venues and a few surprises along the way. Hear eye-witness testimony, press coverage and a bit of gossip too. The walk runs from Highbury and Islington tube forecourt and lasts about 90 minutes at a gentle pace.
<b>Bye Bye Sweet Sixteen</b>	Join the party to celebrate Central Station's 17th birthday, and its unique history! The wonderful Lola Lasagne will be on stage from 11pm. DJ Stevie Tee hosts the evening and plays a special birthday party set in the Underground club from midnight.
<b>LGBT Bestsellers</b>	With over 50 of the bestsellers available in all libraries, it's time to check out what everyone's reading in LGBT fiction. Look out for the display stand at your local library.
<b>Storytime Readings</b>	Listen to readings in the children's section at Waterstone's and while you're there, check out the LGBT History Month display.

DATE	TIME	VENUE
Monday 2 February	6pm-9pm	Central Library Hall, 2 Fieldway Crescent, N5 1PF.
Tuesday 3 February to Friday 27 February	Daily 9am-5pm	Central Library Hall, 2 Fieldway Crescent, N5 1PF.
Monday 2 February to Saturday 28 February	Daily 9am-5pm	Finsbury Library, 245 John Street, EC1V 4NB. For information, contact Jack Gilbert on 07719 378143 or <a href="mailto:jack.gilbert@proudheritage.org">jack.gilbert@proudheritage.org</a>
Monday 2 February to Saturday 28 February	n/a	Visit <a href="http://www.islington.gov.uk/lgbthistory">www.islington.gov.uk/lgbthistory</a> for more details. A display of the images will be arranged in July as part of the Pride Festival.
Tuesday 3 February to Saturday 14 March	Contact Sadler's Wells for times of performances. See page 15 for special offer.	Sadler's Wells Peacock Theatre, Portugal Street, WC2A 2HT.
Preview: Thursday 5 February; thereafter: Friday 6 – Saturday 28 February	Preview: 6pm-8.30pm; thereafter: 12noon-10pm daily	King Edward VI, 25 Bromfield Street, N1 0PZ. Free Entry. Curator, Peter Herbert, email: <a href="mailto:pbherbert@gmail.com">pbherbert@gmail.com</a> . Artist, Warwick Stanley, email: <a href="mailto:warstan@yahoo.co.uk">warstan@yahoo.co.uk</a> , tel: 07772 445960.
Saturday 7 February	2pm	Starts at the forecourt of Highbury and Islington station. To book places, contact <a href="mailto:jack.gilbert@proudheritage.org">jack.gilbert@proudheritage.org</a> or 07719 378143.
Saturday 7 February	9pm-4am	Central Station, 37 Wharfedale Road, N1 9SD. For bookings and information, visit <a href="http://www.centralstation.co.uk">www.centralstation.co.uk</a> or call 020 7278 3294
Visit <a href="http://www.islington.gov.uk/libraries">www.islington.gov.uk/libraries</a> for dates and times.		Various Islington libraries – visit <a href="http://www.islington.gov.uk/libraries">www.islington.gov.uk/libraries</a> for venue details.
Visit <a href="http://www.islington.gov.uk/libraries">www.islington.gov.uk/libraries</a> for dates and times.		Waterstone's, 11 Islington Green, N1 2XH.

EVENT	DETAILS
<b>Edward VI Quiz Night</b>	Test your LGBT trivia at a special LGBT History Month quiz night.
<b>Surprise Surprise – it's Blind Date</b>	'Cilla Black' style with a lookalike hostess. Prize is dinner for two for the winning couple in the restaurant, followed by a night out, during the next seven days.
<b>Celebrating Love and Romance</b>	Whether a longstanding relationship or a new beau or belle, tonight's the evening to share a romantic meal. There is nothing to 'pretend' about our family life! Valentine's Dinner – a three-course dinner in the restaurant at £11.50, followed by top cabaret entertainment and a special Valentine's set by DJ Stevie Tee.
<b>Lily Parr Women's Football</b>	London Lesbian Kickabouts will play the US Connecticut lesbian team in Lily's honour.
<b>The Life and Times of Maisie Trollette</b>	Maisie Trollette is the legendary 'doyenne' of drag and comic creation of David Raven, who has been performing for over 50 years. In a unique evening, Maisie/David recounts the interwoven story of their lives in conversation with Proud Heritage Director, Jack Gilbert. This special event will be poignant, funny, entertaining and revealing. Tonight, Maisie finally gets to dish the dirt!
<b>Blind Date, the Reveal</b>	The winning contestants return to tell 'Cilla' all about their night together. Did it spell love? Or did the embers burn out? Will she make them kiss and tell?
<b>Walk Proud – cutting edge culture</b>	Take a walk past the home of Joe Orton, the iconic Fallen Angel, the London Lesbian and Gay Centre, Trade, Mother Clap's Molly House, The Bell and lots of other famous venues.
<b>Pride Heritage: It's the 70s baby!</b>	With London hosting World Pride in 2012, Proud Heritage and Pride London have teamed up to explore how Pride began back in the early 1970s. The evening promises to be both entertaining and moving, combining personal stories from veterans, music, pictures and poetry.
<b>LGBT History Month Quiz 2009</b>	Hosted by Central Station's very own, well-preserved Mr Duncan Irvine. His fast moving and entertaining annual quiz will cover the history of the LGBT communities as well as a special section on Central Station itself. Teams of two, three or four participants are welcome, with £1 entry per person going towards the prize money for the winning team. Expect plenty of camp fun and frivolity, with some novelty giveaways.
<b>Closing Gala</b>	Say goodbye to LGBT History Month 2009 with wine and song, along with a special appearance by countertenor William Sauerland and his singers from the Royal College of Music Historical Performance Department.
<b>Tickle your Fancy! The Farewell Party</b>	Join us for a fun-packed party to close LGBT History Month 2009. Dress to celebrate the past, present or your vision of the future – whatever tickles your fancy! Tickets are just £5 and include hot/cold buffet (7-10pm) and entertainment comes from the iconic singer/performer Susan Black (11pm) with dancing (midnight until 4am).

DATE	TIME	VENUE
Wednesday 11 February	8pm	King Edward VI, 25 Bromfield Street, N1 OPZ.
Friday 13 February	9pm	Central Station, 37 Wharfdale Road, N1 9SD. For bookings and information, visit <a href="http://www.centralstation.co.uk">www.centralstation.co.uk</a> or call 020 7278 3294.
Saturday 14 February	Serving from 7pm-11pm	Central Station, 37 Wharfdale Road, N1 9SD. For bookings and information, visit <a href="http://www.centralstation.co.uk">www.centralstation.co.uk</a> or call 020 7278 3294.
Sunday 15 February	For details, contact <a href="mailto:lou.hart@camdenlgbtforum.org.uk">lou.hart@camdenlgbtforum.org.uk</a> .	Regents Park.
Sunday 15 February	7pm	Central Station, 37 Wharfdale Road, N1 9SD. For further information, call Central Station on 020 7278 3294 or email <a href="mailto:jack.gilbert@proudheritage.org">jack.gilbert@proudheritage.org</a> .
Friday 20 February	On stage at 10pm	Central Station, 37 Wharfdale Road, N1 9SD. For bookings and information, visit <a href="http://www.centralstation.co.uk">www.centralstation.co.uk</a> or call 020 7278 3294.
Saturday 21 February	2pm	Starts at the entrance of Angel Underground station. To book places, contact <a href="mailto:jack.gilbert@proudheritage.org">jack.gilbert@proudheritage.org</a> or 07719 378143.
Sunday 22 February	7pm	Potential contributors, please contact Jack Gilbert on 07719 378143 or <a href="mailto:jack.gilbert@proudheritage.org">jack.gilbert@proudheritage.org</a> .
Wednesday 25 February	7pm	Central Station, 37 Wharfdale Road, N1 9SD. For bookings and information visit <a href="http://www.centralstation.co.uk">www.centralstation.co.uk</a> or call 020 7278 3294.
Friday 27 February	6pm-8pm	Finsbury Library, 245 St John Street, EC1V 4NB.
Saturday 28 February	7pm-4am	Central Station, 37 Wharfdale Road, N1 9SD. For bookings and information, visit <a href="http://www.centralstation.co.uk">www.centralstation.co.uk</a> or call 020 278 3294.

# Anniversaries in 2009

Stonewall Housing and London Lesbian & Gay Switchboard are two organisations that provide support to the LGBT community in Islington. Both are celebrating big anniversaries this year. Come along to the launch event to hear from them and to find out more about their events to celebrate their anniversaries.

## Stonewall Housing

Stonewall Housing was founded in 1983 and is delighted to be celebrating its 25th anniversary. Stonewall has six houses across four boroughs, offering supported accommodation to 41 young LGBT people.

Over 25 years, the organisation has housed and re-housed nearly 400 young people, and given housing advice to over 12,000 customers through its phone line and drop-ins.

Even after 25 years there is still a huge amount of work to do. Stonewall is currently looking into provisions for older LGBT people and also provides training on LGBT housing issues to mainstream public and third sector organisations.

For further information, contact [info@stonewallhousing.org](mailto:info@stonewallhousing.org).

## London Lesbian & Gay Switchboard (LLGS)

LLGS is a telephone helpline providing support, information and referrals for the lesbian, gay, bisexual and trans community or anyone with questions about sexuality or sexual health.

LLGS offers calm words when you need them most. You can talk to their trained counsellors about anything you like – coming out, going out, sexual health, mental health, domestic violence, homophobia, bullying, etc.

Each year, the LGBT volunteers at LLGS speak to some 30,000 people of all ages and backgrounds from across the UK. They don't judge their callers, don't tell anyone else who calls them and never tell their callers what to do.

In 2009 LLGS is celebrating 35 years and during LGBT History Month in February, it will be running a whole host of events.

The LLGS telephone helpline is **020 7837 7324** (10am to 11pm daily) and the online database is [www.queery.org.uk](http://www.queery.org.uk). For more information about the service, or how to volunteer or donate, please visit [www.llgs.org.uk](http://www.llgs.org.uk).

# Launch Event

**We start LGBT History Month with a celebration of the national theme of Youth and Education. There will be contributions from Stonewall Housing and the London Gay & Lesbian Switchboard.**

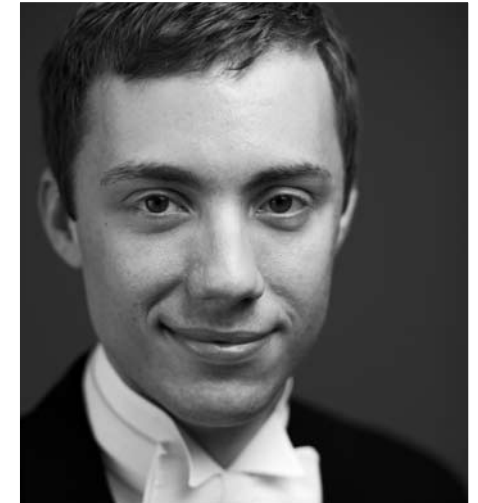
One of the highlights will be a preview of an art exhibition based on LGBT life today, with work by young LGBT people, along with local artists. The evening will continue with a few keynote speakers from the Stonewall Housing and London Gay & Lesbian Switchboard and will end with a short concert of music and entertainment.

Leyla Aslan will perform in her unique style, across a range of genres including classical, folk and spiritual. The Pink Singers is a London-based lesbian and gay choir who produce genuinely exciting and diverse performances.

You'll also find a number of information stalls from organisations that work closely with the LGBT community.

This year the event is ticketed so to get your free ticket, just email [andrew.younger@islington.gov.uk](mailto:andrew.younger@islington.gov.uk).

# Closing Gala



**We bring LGBT History Month 2009 to a close with an informal evening of wine and song at Finsbury Library. There'll also be a special guest performance from countertenor William Sauerland (pictured) and his singers from the Royal College of Music Historical Performance Department.**

The event is ticketed so to get your free ticket, just email [andrew.younger@islington.gov.uk](mailto:andrew.younger@islington.gov.uk).

Tickets are limited, so it will be on a 'first come first served' basis.

# A Day in Our Life

This February, we want to encourage you to go out across the borough and take pictures of people or places in Islington that connect with LGBT life and memory. They can be personal to you, recording events as they happen or as you remember, or reflect something that you think means a lot.

This unique event will allow (LGBT) people to record what being LGBT means to them in Islington. To make it even easier, Islington UNISON has provided a number of disposable cameras for anyone wanting to take part.

All we ask is that you record it on film and write a few lines telling us why that particular place or person is important to you.

These images will be archived and given to the Islington Local History Collection to form part of a unique record celebrating LGBT history in the borough. We will also display some of these images at a central venue during Pride Week in July 2009.

If you'd like to take part and want more information and your free camera, please contact **andrew.younger@islington.gov.uk** or **charles.barnard@islington.gov.uk**.

# London Metropolitan University

**London Met LGBT is the LGBT society at London Metropolitan University. The university has two campuses spread across London.**

Established in 2006, it aims to get LGBT students together in a safe environment but also include anyone outside of that bracket in meetings, campaigns and events. To fully address the issues of LGBT students, the society feels we have to look outside of our own community.

There are fortnightly meetings with the aim of supporting LGBT students, representing the views and interests of LGBT students, campaigning issues that affect membership, promoting equality and most importantly being fun and inclusive!

London Met LGBT is hosting a number of LGBT History Month events, including panel debates, workshops and an arts event.

Visit the website for more information or to sign up to the mailing list (you don't have to be a student): **www.metlgbt.co.uk**.

# London Friend

**London Friend is a charity that has been supporting the LGBT community in London since 1972. They will be at the launch event where you can find out more about the organisation, which promotes the health and emotional well-being of those who either identify as LGBT or are unsure of their sexuality.**

London Friend is unique in offering the LGBT community a range of specialised services, as well as a safe, non-commercial and alcohol-free meeting place.

You can find more information on their website or by calling the number below.

## London Friend

86 Caledonian Road, Kings Cross, London N1 9DN

Office tel: **020 7833 1674**

Helpline tel: **020 7837 3337**

Email: **office@londonfriend.org.uk**

Web: **www.londonfriend.org.uk**

# Pace

**Pace promotes the mental health and emotional wellbeing of the LGBT community.**

They aim to provide a safe and welcoming environment for all lesbian, gay, bisexual and questioning young people under the age of 25. They give non-judgemental information and support on a range of issues relating to sexuality.

**Girl Diva** is their weekly group for women aged 25 and under who are lesbian, bisexual or unsure of their sexuality. The group is producing work for the LGBT Art Exhibition on page 15. Girl Diva meets every Wednesday, 6.30pm-9.30pm. Call **Ali Jay** for details on **020 7700 1323**.

**OutZone** is a popular and friendly youth project for gay and bisexual young men aged 25 and under who live, work or play in north London and the surrounding area.

OutZone meets every Friday, 6.30pm-9.30pm.

Call **020 7700 1323**

or visit the website at:

**www.outzone.org**.

# Central Station

Central Station has been at the forefront of LGBT history in London for almost 40 years. In the 1970s, as The Prince Albert, it was home to the first GLF discos and featured in the film 'Nighthawks'. When it reopened as Central Station on 6 February 1992, it became the home of many community groups after the demise of the London Lesbian and Gay Centre in Farringdon.

Many LGBT sports groups, including Kings Cross Steelers Rugby Club, were formed at Central Station. Derek Jarman was canonised by the sisters of Perpetual Indulgence and Angela Mason debated with Peter Tatchell. Famous drag queens to appear regularly included Phil Starr, Dockyard Doris, Maisie Trollette, Dave Lynn, Adrella, Lola Lasagne and many more.

The venue has always been innovative – holding LGBT debates, plays, pantos, quizzes, charity fundraisers, mainly for HIV/AIDS charities – throughout its history. At the same time, it has played host to a huge variety of interesting fetish and 'cruisy' clubs in the Underground bar.



In a major makeover, the bar has now been brought up to date in the ever-changing King's Cross area. Gone are the 70s-style, blacked-out windows and security doors. Now it's open every day from 11am, serving top quality food and drink to all in either the bar or the stunning new first floor restaurant. So, if you haven't been recently, pop in and prepare to be very pleasantly surprised!

Once again this year, Central Station is proud to host its own unique range of events to celebrate LGBT History Month. The venue's website contains more information:

[www.centralstation.co.uk](http://www.centralstation.co.uk).

# Art Exhibitions

## LGBT Art Exhibition

We've put together a joint exhibition of exciting new artwork that focuses on LGBT life, with a variety of images and free standing artwork. The exhibition features both young amateurs and Islington-based artists. The amateur work comes from Girl Diva and their work is based on the theme of the 'WOW Factor'. There will also be a joint piece of work created by Girl Diva and OutZone called 'Our Own History'.

## Famous Cruising Grounds

This collection of watercolour drawings by local painter Warwick Stanley were inspired by famous cruising grounds in Islington and Camden, which existed at a time when homosexuality in public was illegal.

**Curator: Peter Herbert –**  
**email: [pbherbert@gmail.com](mailto:pbherbert@gmail.com)**  
**Artist: Warwick Stanley –**  
**tel: 07772 445960;**  
**email: [warstan@yahoo.co.uk](mailto:warstan@yahoo.co.uk)**

**Sadler's Wells Peacock Theatre**  
**Portugal Street**  
**London WC2**

**Sadler's Wells**  
 London's Dance House

## SPECIAL TICKET OFFER

**Traces – Circus as you've never seen it before!**

**Tuesday 3 February – Saturday 14 March 2009**

To get **50% off** the top two ticket prices (normally £36 and £28), call the ticket office now on **0844 412 4322** and quote **"Islington Offer"** or book online at [www.sadlerswells.com](http://www.sadlerswells.com) and enter the promo code **pcdislington** when prompted.\* Please note, this show contains strobe lighting.

\* Applies to shows between Tuesday 3 February and Thursday 12 February, excluding Friday and Saturday performances. Applies to £36 and £28 tickets ONLY. Subject to allocation availability. Not available retrospectively or in conjunction with any other offer. £2.20 transaction fee applies for telephone bookings, £1.50 for bookings made online.

**If you need help translating this brochure,  
please contact Islington Council on  
020 7527 2000 with your required  
language and your telephone number  
and an interpreter will contact you.**

**If you would like this document in large  
print, Braille or on audiotape, please  
contact 020 7527 2000.**

**Bengali** 'বাক হিন্দুটি মানণ্ড' (কালোদের ইতিহাস বিষয়ক মানা)-এর এই কর্মসূচীটি অনুবাদ করতে যদি আপনার সাহায্যের  
দরকার হয়, তাহলে দয়া করে 020 7527 2000 নম্বরে ইঞ্জিনিয়ারিং কন্সাল্টেংগের সাথে যোগাযোগ করে তাদেরকে  
আপনার যে ভাষায় অনুবাদ দরকার সেই ভাষায় কথা বলুন এবং আপনার টেলিফোন নম্বর দিন। তারপর একজন  
ইন্টারপ্রেটার (শোভায্যী) আপনার সাথে যোগাযোগ করবেন।

**Somali** Haddii aad uga baahan tahay af-celin qoraalkan ku  
saabsan isbedeladda lagu sameeynayo meelaha baabuurta  
la dhigto ee Islington, Fadlan kala xidhiidh Kowmsalka  
Islington 020 2527 2000 adiga oo sheegaya luqadda  
aad u baahan tahay iyo lambarka telefoonkaaga, markaa  
turjubaan ayaan kula soo xidhiidhi doonna.

**Spanish** Si necesita ayuda para comprender este folleto sobre cambi-  
os en las reglas de estacionamiento en Islington, le rogamos  
llamar a la Municipalidad de Islington al 020 7527 2000.  
Deberá decir cuál es su idioma y dar su teléfono, después de  
lo cual un intérprete le volverá la llamada.

**Turkish** İslington'daki arabaların otopark değişikliklerini anlatan  
bu broşür konusunda size Türkçe bilgi verilmesini  
istiyorsanız, lütfen 020 7527 2000 numaradan İslington  
Belediyesini arayın, bu konuda Türkçe bilgi verilm-  
esini istediğinizi ve telefon numaranızı bildirin. Bir  
tercümanımız sizi arayıp gerekli bilgiyi verecektir.

## **Contact Islington**

222 Upper Street

London N1 1XR

**E** [contact@islington.gov.uk](mailto:contact@islington.gov.uk)

**T** 020 7527 2000

**F** 020 7527 5001

Minicom 020 7527 1900

**W** [www.islington.gov.uk](http://www.islington.gov.uk)



Printed on recycled paper using vegetable based inks.  
Published January 2009.